

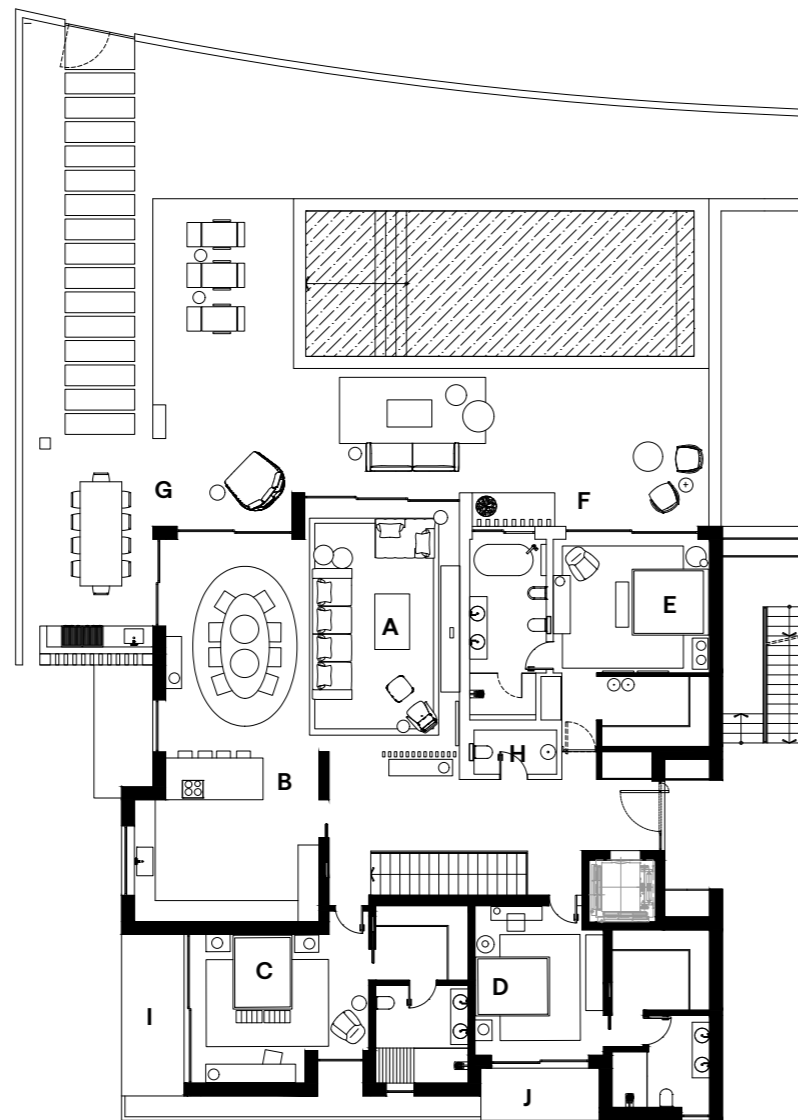
GARDEN RESIDENCES



3 BEDROOM	Q1
Bedrooms	3 + 1
Bathrooms	6
Carpark	2
Total Area	459,57
Above Ground	264,66
Basement	194,91
Garden Area	431,29

GROUND FLOOR

A	Living Room	31.65m ²
B	Kitchen w/ Dinning Area	49.01m ²
C	Bedroom	33.68m ²
D	Bedroom	29.34m ²
E	Master Suite	37.53m ²
F	Outdoor Living Area	64.03m ²
G	Outdoor Kitchen	19.53m ²
H	Cloakroom	2.97m ²
I	Terrace	7.51m ²
J	Terrace	11.25m ²



BASEMENT

K	Cinema Room (Optional)	25.11m ²
L	Home Office/Bedroom	29.49m ²
M	Wine Cellar	3.38m ²
N	Laundry Room	7.46m ²
O	Cloakroom	2.35m ²
P	Private Parking	43.05m ²
Q	Technical Area	15.79m ²
R	Pateo	5.22m ²

