

Alive

RIVERSIDE

Location in the Building



Location on the Floor



- Proximity to Metro Station (Future Ruby Line)
- Proximity to the River and Commercial Zones
- Superb Views of Historic Porto, River and Sea

OUTDOOR

- Green Spaces
- Leisure Areas
- Fire Pit
- Barbecue
- Organic Garden
- Children's Play Area

INDOOR

- Kids Club
- Gym
- Coworking Area
- Bike Parking
- Pet Care Area
- UberBox Parking

TECNOLOGIA

- Alive App
- Common Security with CCTV
- Pre-Installation of Electric Car Charging Station
- Wi-fi in Common Areas

PROJECT Multi-family Building

LOCATION Av. Mte. José Rodrigues, Vila Nova de Gaia

Total Area

78,42m²

Terrace Area

n/a

Fraction Area

59,13m²

Balcony Area

5,10m²

Typology

T1

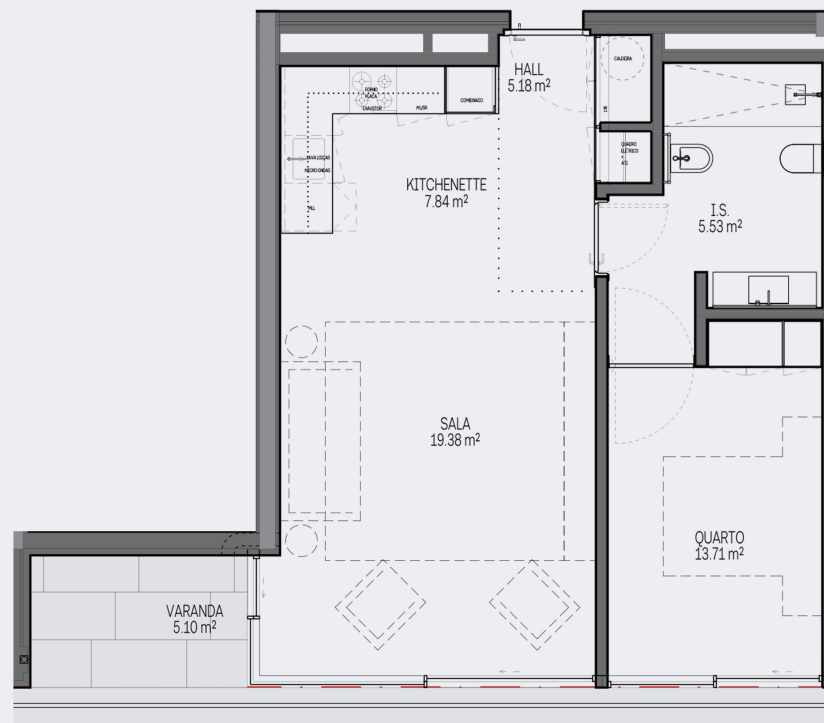
Fraction

AE

Floor

2

Floor 2 Plan



Garage Area

14,19m²

Spots

1



Exterior Finishes

COMMON SPACES

- Foundation in Natural Stone
- Facade in ETICS System
- Aluminum Frames with Reynaers type Minimalist System
- High Performance Thermal and Acoustic Glass
- White lacquered metal railings
- Terraces in Deck and Grass

Interior Finishes

CARPENTRY

- Lacquered Carpentry (Frames, Doors, Cabinets, Baseboards)
- Knobs and Hardware (JNF type) in Satin Steel
- Flooring with Natural Oak Wood Finishing

TOILETS

- Suspended sinks (Toilet, bidet), Sanindusa type or similar, with Soft Close
- Furniture in Lacquered MDF
- Countertops in Quartz Compact or similar
- Built-in Washbasins

KITCHENS

- Cabinets in Lacquered MDF
- Tops and Lambrins in Quartz Compact or similar
- Built-in sink in Stainless Steel
- Single-lever Shower Mixer
- Siemens or similar Appliances: Oven, Induction Cooktop, Exhaust Fan, Microwave, Refrigerator and Dishwasher
- Ceramic Floor

HOME AUTOMATION AND LIGHTING

- Domotics System with App Control for Lighting, Blackouts, which can be complemented with other features
- Video intercom
- Partial Illumination with LED Technology Projectors
- Lighting in closets

HEATING

- Hidden Duct Air Conditioning System, with App Control
- Solar Panel with Termoacumulator

COMMON AREAS OF THE CONDOMINIUM

- Lacquered Carpentry (Frames, Doors, Cabinets, Baseboards)
- Knobs and Hardware (JNF type) in Satin Steel
- Walls with Vertical Slatted Panels
- Ceramic Flooring

Typology
T1

Fraction
AE

Floor
2

PISO/DESIG.	FRACÇÃO
1-2-3 03	1-AE-AP
ABC (m²)	TIPOLOGIA
59.13 m²	T1



Date ____/____/____ Price _____ Expiration ____/____/____ Signature _____

