

Alive

RIVERSIDE

Location in the Building



Location on the Floor



- Proximity to Metro Station (Future Ruby Line)
- Proximity to the River and Commercial Zones
- Superb Views of Historic Porto, River and Sea

OUTDOOR	INDOOR	TECNOLOGIA
• Green Spaces	• Kids Club	• Alive App
• Leisure Areas	• Gym	• Common Security with CCTV
• Fire Pit	• Coworking Area	• Pre-Installation of Electric Car Charging Station
• Barbecue	• Bike Parking	• Wi-fi in Common Areas
• Organic Garden	• Pet Care Area	
• Children's Play Area	• UberBox Parking	

PROJECT Multi-family Building

LOCATION Av. Mte. José Rodrigues, Vila Nova de Gaia

Total Area
233,64m²

Terrace Area
40,77m²

Fraction Area
147,13m²

Balcony Area
15,57m²

Typology
T3
DUPLEX

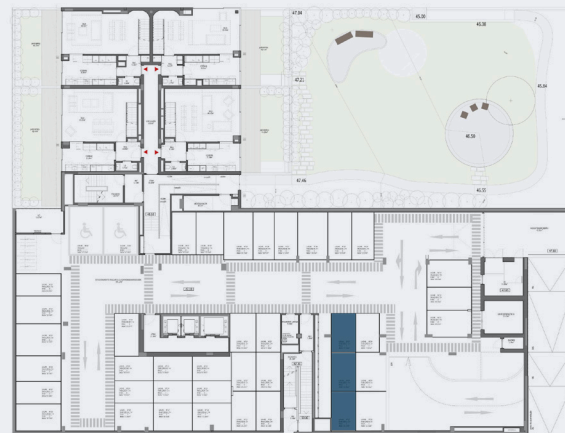
Fraction
C

Floor
0

Floor -1 Plan



Floor 0 Plan



Garage Area
30,17m²

Spots
3



Exterior Finishes

COMMON SPACES

- Foundation in Natural Stone
- Facade in ETICS System
- Aluminum Frames with Reynaers type Minimalist System
- High Performance Thermal and Acoustic Glass
- White lacquered metal railings
- Terraces in Deck and Grass

Interior Finishes

CARPENTRY

- Lacquered Carpentry (Frames, Doors, Cabinets, Baseboards)
- Knobs and Hardware (JNF type) in Satin Steel
- Flooring with Natural Oak Wood Finishing

TOILETS

- Suspended sinks (Toilet, bidet), Sanindusa type or similar, with Soft Close
- Furniture in Lacquered MDF
- Countertops in Quartz Compact or similar
- Built-in Washbasins

KITCHENS

- Cabinets in Lacquered MDF
- Tops and Lambrins in Quartz Compact or similar
- Built-in sink in Stainless Steel
- Single-lever Shower Mixer
- Siemens or similar Appliances: Oven, Induction Cooktop, Exhaust Fan, Microwave, Refrigerator and Dishwasher
- Ceramic Floor

HOME AUTOMATION AND LIGHTING

- Domotics System with App Control for Lighting, Blackouts, which can be complemented with other features
- Video intercom
- Partial Illumination with LED Technology Projectors
- Lighting in closets

HEATING

- Hidden Duct Air Conditioning System, with App Control
- Solar Panel with Termoacumulador

COMMON AREAS OF THE CONDOMINIUM

- Lacquered Carpentry (Frames, Doors, Cabinets, Baseboards)
- Knobs and Hardware (JNF type) in Satin Steel
- Walls with Vertical Slatted Panels
- Ceramic Flooring

Typology
T3
DUPLEX

Fraction
C

Floor
0



Date __/__/__ Price _____ Expiration __/__/__ Signature _____

